

SELECT CUSTOMERS



NETWORK MANAGEMENT SUITE

Unsure of what's on your network and how it changes? Aware of traffic threshold policy violations or of which nodes generate the most traffic? Can you visualize the traffic between your network's devices?

GroundWork Network Management Suite (NMS) integrates popular open source network management tools with the core features of GroundWork Monitor Enterprise. Incorporating detailed network infrastructure information into your GroundWork Monitor system enhances trouble-shooting and allows you to correlate network behavior with monitoring data from systems, devices, applications, and network infrastructure.

Depending upon your needs, select from one to all three of these modules:

- **Protocol Analysis Module (based on ntop)** – Breaks down network usage by protocol, application, port, operating system, etc.
- **Network Map Module (based on Network Weathermap)** – Provides a high-level status view of the entire network infrastructure.
- **Network Discovery Module (based on NeDi)** – Locates network infrastructure devices (such as switches and routers), creates a topology, and alerts you to network changes.

Use the modules individually or together to augment network monitoring and visualization.

GroundWork NMS subscribers receive professional technical support and updates for the modules. Additionally, hands-on training for the Network Management Suite is available from GroundWork University.

DEPLOYMENT OPTIONS

Deploy NMS on the same server as GroundWork Monitor Enterprise or distribute the modules among several servers to allow for greater capacity.

"Right after implementation, we immediately saw a 15 percent improvement in uptime — and this availability just keeps growing.... The dramatic increases in system availability are largely because IT staff can now address problems within minutes instead of hours."

Tom Lamb, CTO,
University of North Carolina
at Charlotte (UNCC)

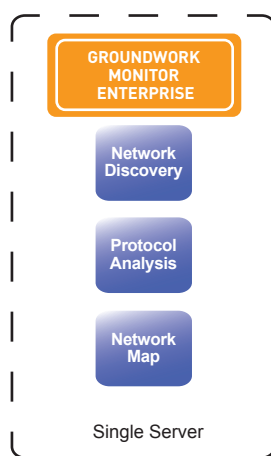


Fig. 1 - Single Server Deployment

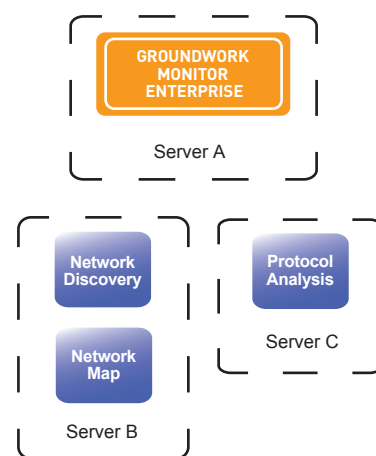
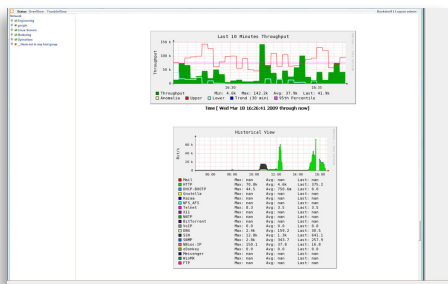


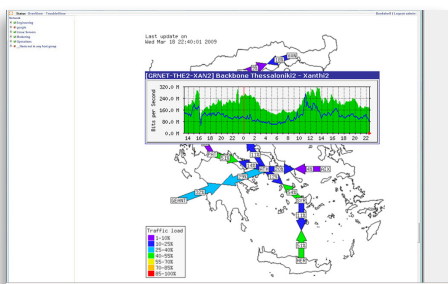
Fig. 2 - Multiple Server Deployment



PROTOCOL ANALYSIS MODULE

The Protocol Analysis module simultaneously monitors network traffic data from multiple probes.

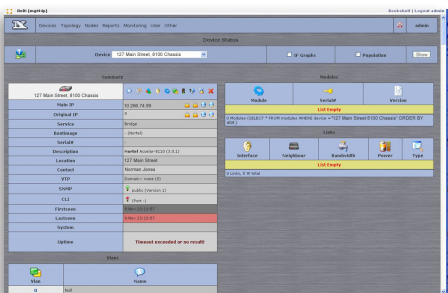
- **Sort and analyze network usage data** – Displays network usage data about a variety of criteria (bandwidth usage, protocols, applications, ports, address, etc.).
- **Access current and historical traffic data** – Listens to and profiles traffic protocols on network segments. Saves traffic statistics for long-term trend analysis.
- **Manage bandwidth** – Tracks actual, average, and peak bandwidth using Netflow / sFlow data from routers and switches.
- **Pinpoint policy and security violations** – Determines the operating system and identity of network nodes and users.
- **Identify rogue protocols in use on your network** – Data on unauthorized low-level network traffic helps you spot unauthorized point-to-point communications.



NETWORK MAP MODULE

The Network Map module displays a graphical map of your network traffic status.

- **See current network traffic levels at a glance** – Color-codes network usage levels between selected devices and segments. Displays utilization and status of network, including LAN and WAN connections.
- **Isolate network traffic problems** – Provides wide-area network map with drill-downs to network segments. Integrates with Protocol Analysis and Traffic Graphing modules to help you analyze underlying causes of network traffic problems.



NETWORK DISCOVERY MODULE

The Network Discovery module discovers network topology and generates a device inventory (including: operating system versions, module versions, and interfaces).

- **Automatically discover network changes** – Notifies you when known network components fail to be discovered or expected devices are missing. Alerts you when new network components are found.
- **Identify and update network dependencies** – Reduces false alarms among related devices.
- **Simplify asset management tasks** – Captures and stores changes to network device configurations at each run.

ABOUT GWOS

San Francisco-based GroundWork Open Source, Inc. (GWOS) is the market leader in commercial open source network and systems management software, delivering enterprise-class network, system and application management solutions at a fraction of the cost of proprietary solutions.

139 Townsend Street
Suite 500
San Francisco, CA 94107
Toll-free: (866) 899-4342
Tel: (415) 992-4500
Fax: (415) 947-0684
info@gwos.com
www.gwos.com